

Nav:	Mijar:	Mêjû:
Pol:	Endamên Bedenê 1	

Bi tîpên di nav xelean de navên endamên bedenê yê jêrîn binivîsîne!

14 r s e î ⑭

1 n î e

2 o r p

4 b o i r

10 i n j a g b

3 a v ç

11 p o z

13 d v e

12 e g ç n

6 u g h ⑥

9 i v l i b ⑨

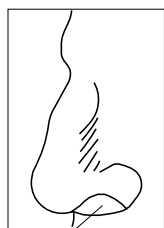
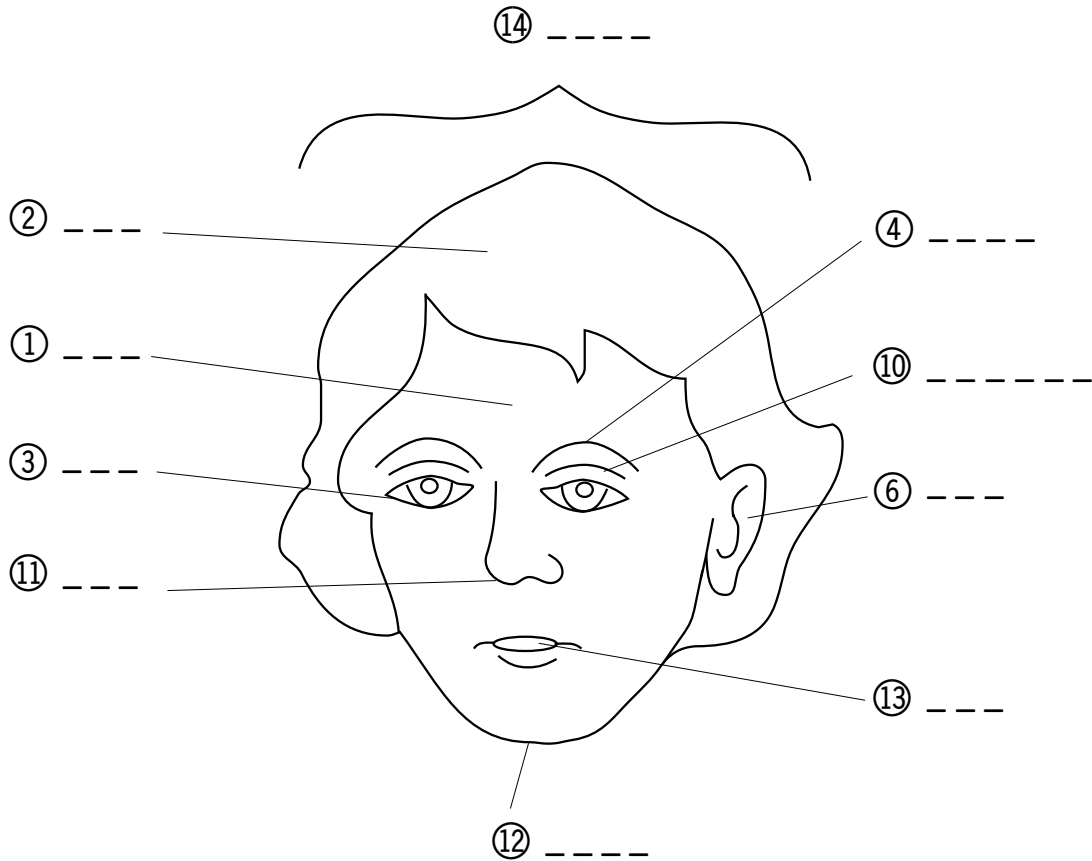
8 ê l v

7 n a d d i ⑦

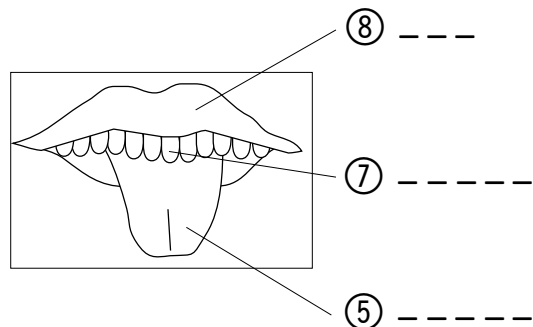
5 n z m a i

Nav:	Mijar:	Mêjû:	
Pol:	Endamên Bedenê 1		

Navên endamên bedenê yê jêrîn binivîsîne!



⑨ -----



⑧ -----

⑦ -----

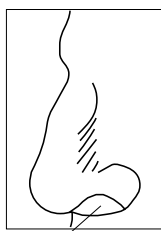
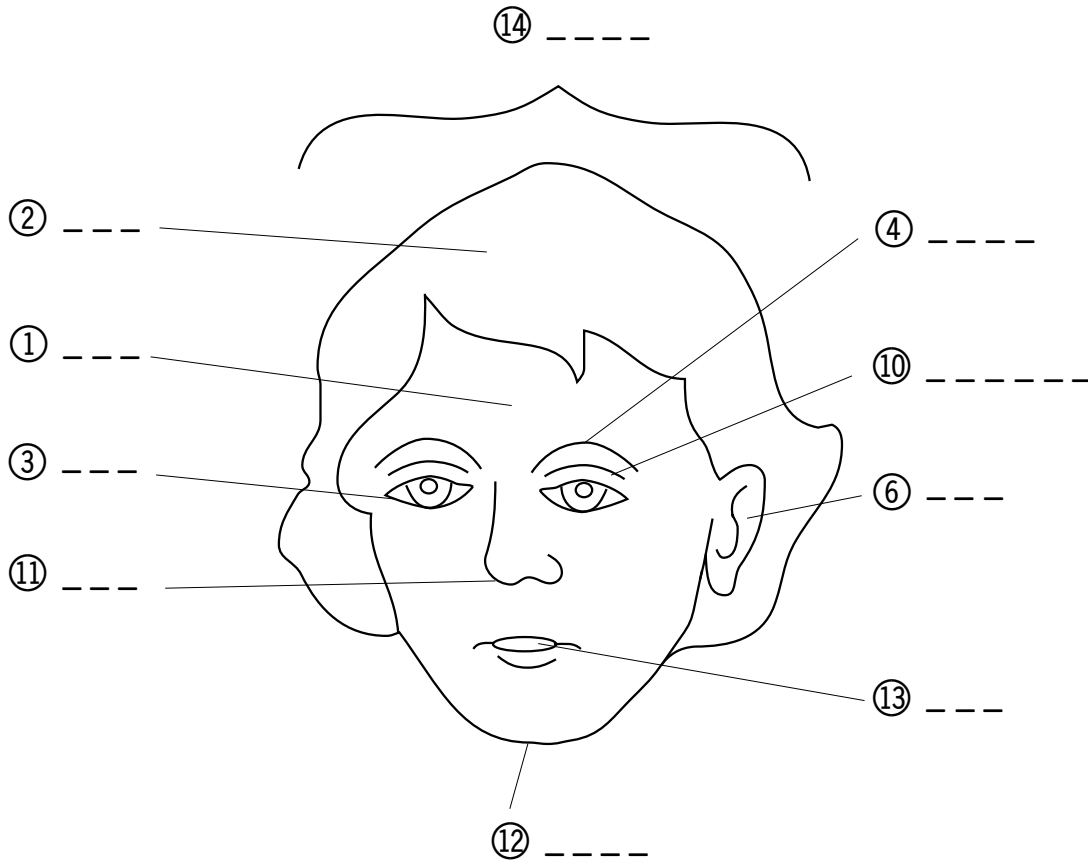
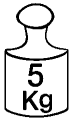
⑤ -----

😊 Xizikên li ba hejmaran ji bo alikariya te ne.
Peyva ku tu lêdigerî, ji hewqas tîpan pêk tê.

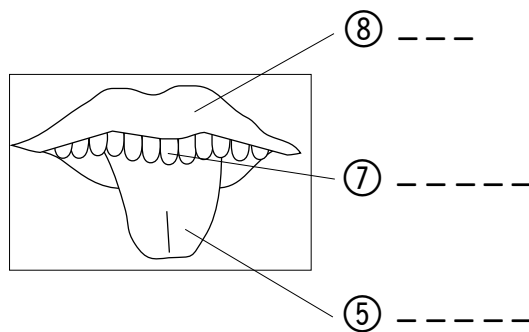
zod - serî - çav - enî - jîng - dan -
por - ziman - dêv - biro - lêv - guh -
çeng - bîvîl

Nav:	Mijar:	Mêjû:	
Pol:	Endamên Bedenê 1		

Navên endamên bedenê yê jêrîn binivîsîne!



⑨ -----



⑧ -----

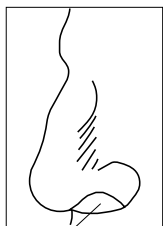
⑦ -----

⑤ -----

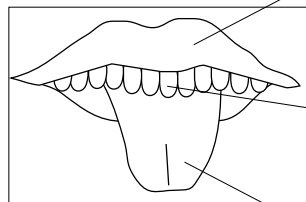
😊 Xizikên li ba hejmaran ji bo alikariya te ne.
Peyva ku tu lêdigerî, ji hewqas tîpan pêk tê.

Nav:	Mijar:	Mêjû:
Pol:	Endamên Bedenê 1	

Navên endamên bedenê yê jêrîn binivîsîne!

9 [] [] [] [] [] []



8 [] [] [] []

7 [] [] [] [] [] []

5 [] [] [] [] [] []

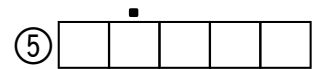
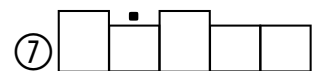
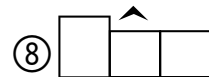
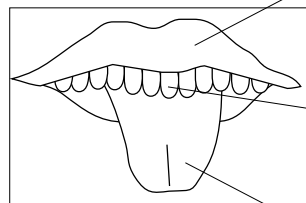
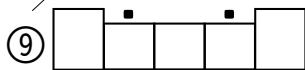
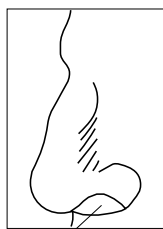
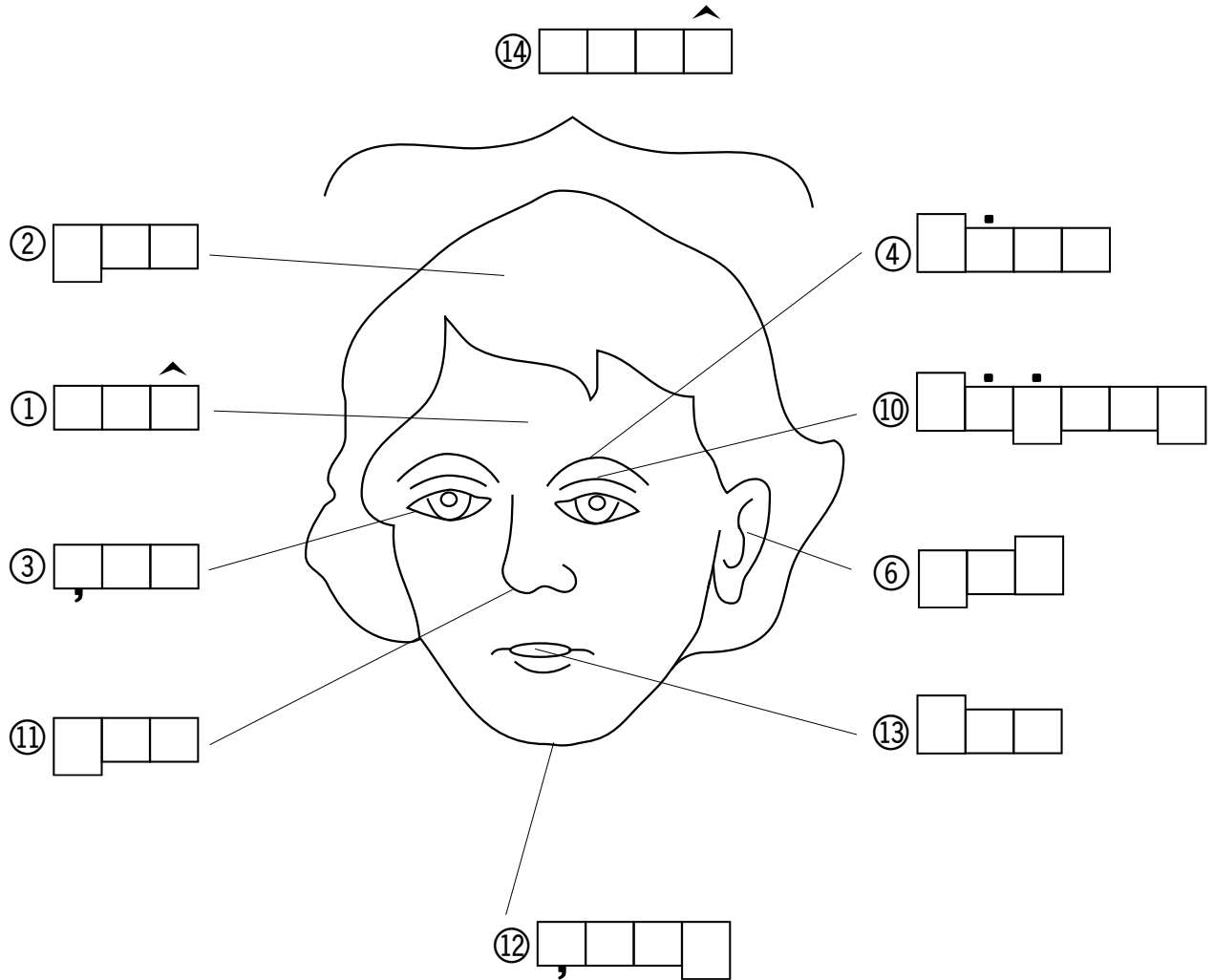
© 2000, Endamên Bedenê 01, 10-5

Çavikên li ba hejmaran ji bo alikariya te ne.
Peyva ku tu lêdigerî, ji hewqas tîpan pêk tê.

lip - bîvî
- zop - sêr - enî - çav - şiang -
por - zim - del - bîro - lêv - guh - çeng

Nav:	Mijar:	Mêjû:
Pol:	Endamên Bedenê 1	

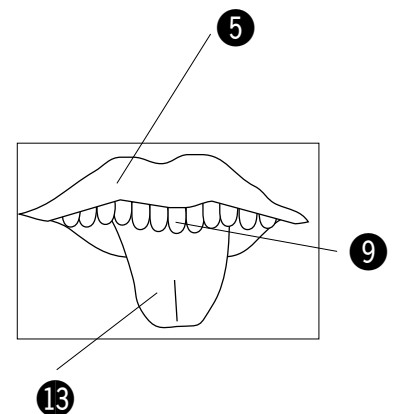
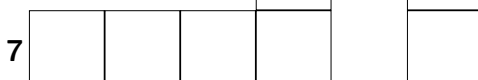
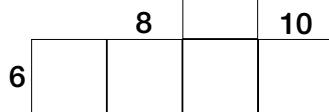
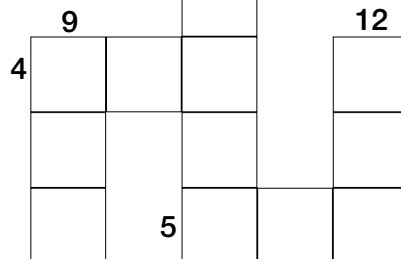
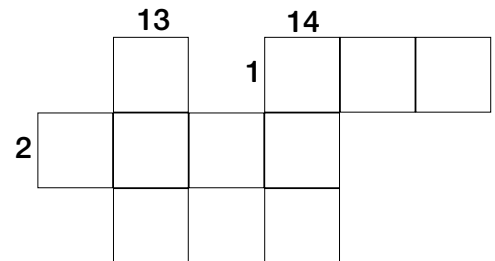
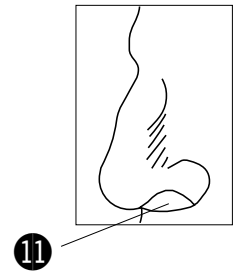
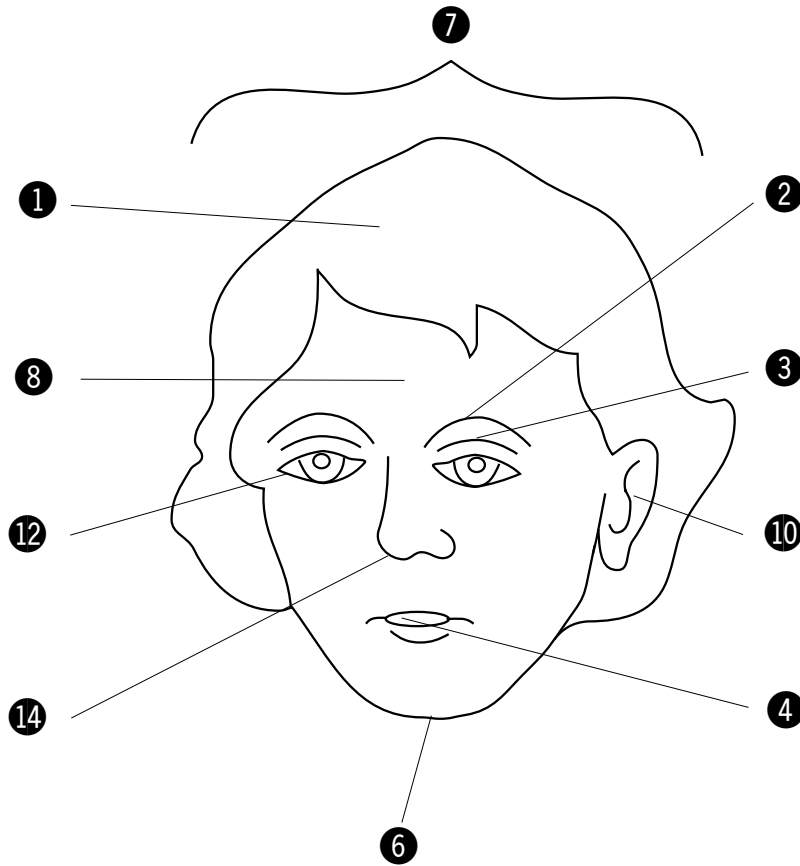
Navên endamên bedenê yê jêrîn binivîsîne!



Çavikên li ba hejmaran ji bo alîkarîya te ne.
Peyva ku tu lêdigerî, ji hewqas tîpan pêk tê.

Nav:	Mijar:	Mêjû:	
Pol:	Endamên Bedenê 1		

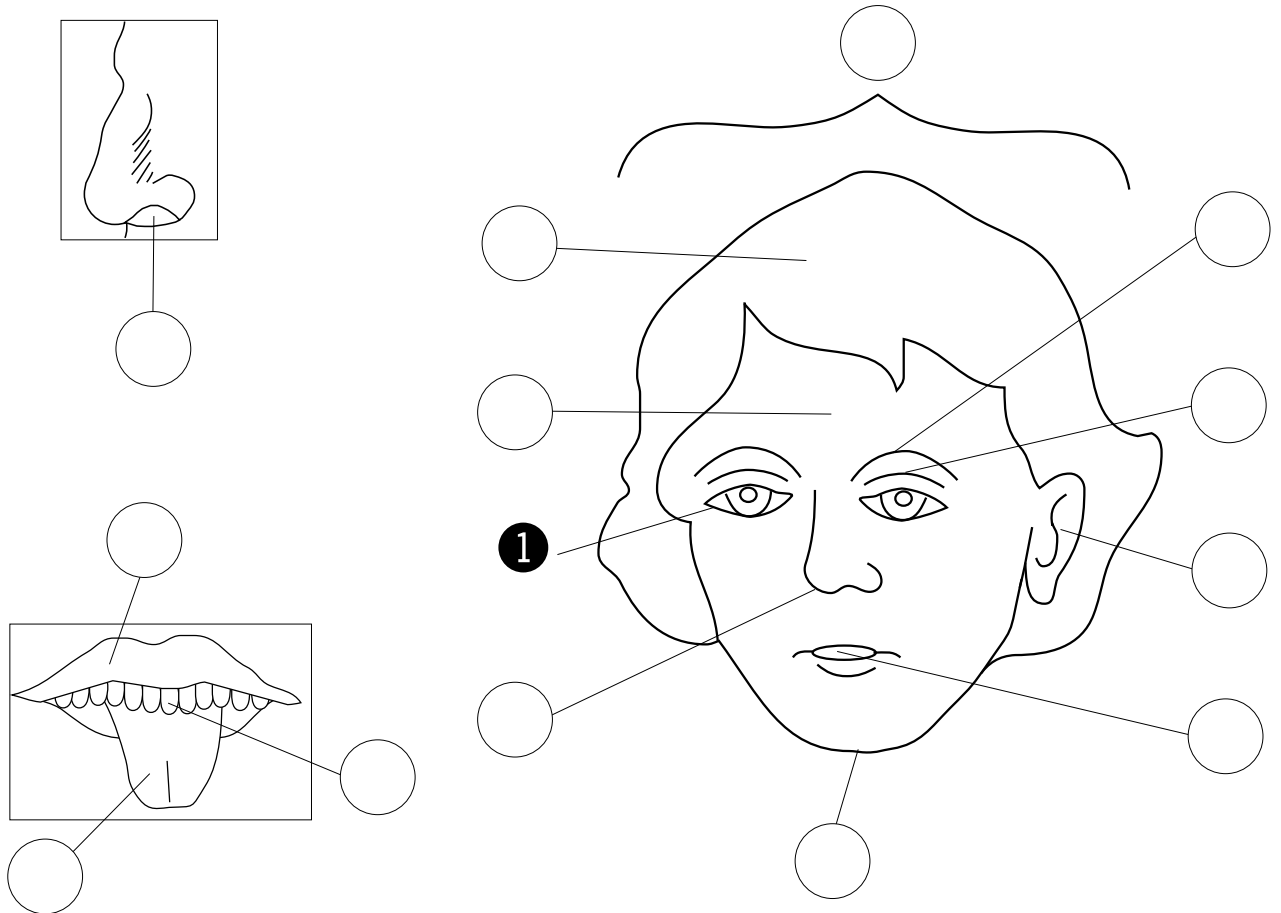
Xaçepirsê bi navên endamên bedenê yê jêrîn dagire!



Nav:	Mijar:	Mêjû:
Pol:	Endamên Bedenê 1	

1. Navên endamên bedenê yê jêrîn rast bike!

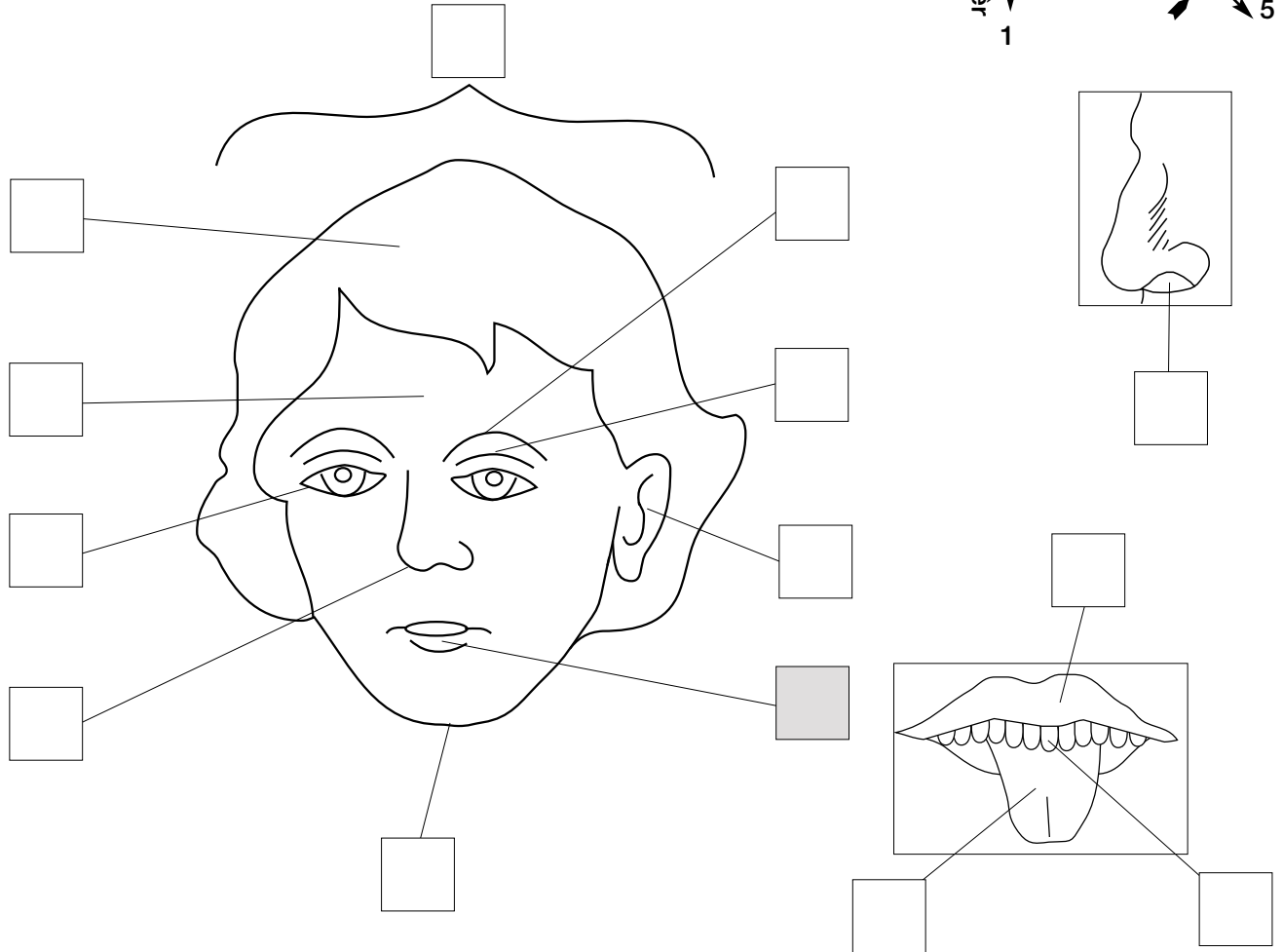
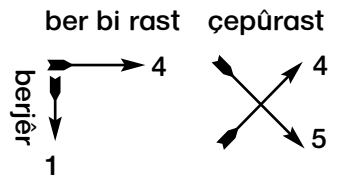
2. Hejmarên li hember navan li ba endamên bedenê yê jêrîn binivîsîne!



- | | | | |
|----------|-------|------------|-------|
| 1 avç | çav | 8. gneç | |
| 2. neî | | 9. opr | |
| 3. mizna | | 10. hgu | |
| 4. ibilv | | 11. vde | |
| 5. dadni | | 12. îrse | |
| 6. êlv | | 13. irob | |
| 7. opz | | 14. jngabi | |

Nav:	Mijar:	Mêjû:
Pol:	Endamên Bedenê 1	

Di xaçpîrsê de li navên endamên bedenê yê jêrîn bigere!



û	z	ç	k	m	o	q	s	b	y	x	d	e	v	y	v
l	î	b	e	w	e	k	j	h	i	f	c	d	w	m	d
l	t	z	b	n	t	x	ş	ç	a	v	m	h	j	r	i
i	ê	w	q	o	g	c	ê	r	q	s	i	t	z	t	d
h	m	v	l	n	j	r	o	a	s	w	q	l	c	h	a
n	f	v	a	a	ş	p	ş	s	z	s	n	h	j	o	n
k	l	j	a	y	x	q	m	u	j	k	e	c	a	m	q
s	i	y	u	o	k	b	e	x	q	û	î	r	k	w	x
b	h	k	r	m	g	r	t	p	o	z	k	o	î	n	s
q	n	i	c	ş	h	u	u	r	ç	k	o	n	d	i	b
m	b	b	z	u	j	s	h	b	y	x	e	j	k	x	e
m	u	t	r	s	c	g	d	a	z	i	m	a	n	g	t